

+ ENERGYSAVER THERMO FLAP

Basic components

- 1 BK-AIO controller
- 2 LST-CO₂-V3 status transmitter
- 3 RT 45/O-RJ button
- 4 SD-L-F1 50 m smoke detector
- 5 RJ45 connector adapter package
- 6 Installation materials and cables



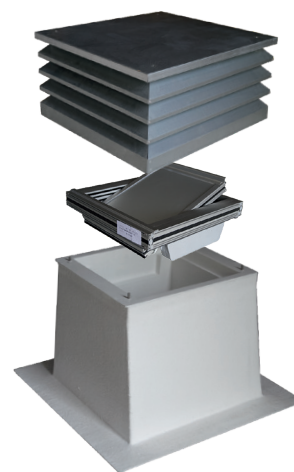
THE BENEFITS

- ✓ Best U-value on the market:
0.41 W/(m²*K) (TF 450, 450 LONG)
0.46 W/(m²*K) (TF 600)
0.55 W/(m²*K) (TF 800)
- ✓ Genuine thermal break
- ✓ NSHEV tested to EN 12101-2



Selectable Thermo Flap

| | | |
|------------------|-------------------------------------|-----------|
| Thermo Flap 450 | Energysaver Thermo Flap 450 | € 5500.00 |
| Thermo Flap 450L | Energysaver Thermo Flap 450L | € 5550.00 |
| Thermo Flap 600 | Energysaver Thermo Flap 600 | € 5600.00 |
| Thermo Flap 800 | Energysaver Thermo Flap 800 | € 6200.00 |



Thermally insulated roof hood Thermo Flap

Natural, thermally high-quality smoke and heat exhaust ventilator (NSHEV) for horizontal installation on flat roofs (up to max. roof pitch of 10°). Ventilation and smoke extraction hood with 24 V electric motor drive for the discharge of

combustion gases and for ventilation purposes. The ready-to-install solution consists of a curb and an integrated motor-driven closing element with louvre cover for weather protection.

Benefits

- » Thermally insulated profile (optimised heat insulation)
- » Horizontal ventilation opening in passive or low-energy buildings
- » Approval in accordance with VdS 2895
- » Virtually noiseless, therefore ideal for use in sound-sensitive areas

Performance profile

- » Smoke extraction and ventilation regardless of wind direction
- » Ready-to-install solution
- » Condensate formation prevented by GRP base
- » Complies with requirements of German state building codes

Technical specifications

- » GRP base including an integrated louvre window
- » Louvre hood with ventilation openings on 4 sides to protect against precipitation
- » Space-saving where space is limited: dimensions of louvre hood correspond to GRP base
- » Includes integrated insect screen

Installation

- » The GRP base is integrated directly into the building insulation during the roof works

+ ENERGYSAVER SLIDE FLAP

Basic components

- 1 BK-AIO controller
- 2 LST-CO₂-V3 status transmitter
- 3 RT 45/O-RJ button
- 4 SD-L-F1 50 m smoke detector
- 5 Installation materials and cables



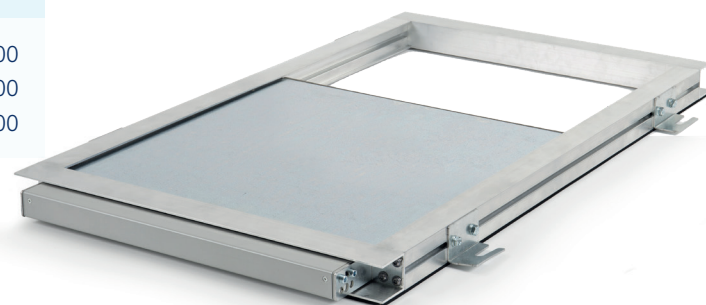
THE BENEFITS

- ✓ Low height
- ✓ Closure solution with U-value of 1.82 W/(m²*K)
- ✓ NSHEV tested to EN 12101-2



Selectable Slide Flap

| | | |
|-----------------|------------------------------------|-----------|
| Slide Flap 410 | Energysaver Slide Flap 410 | € 4000.00 |
| Slide Flap 760 | Energysaver Slide Flap 760 | € 4500.00 |
| Slide Flap 1160 | Energysaver Slide Flap 1160 | € 5250.00 |



Space-saving slide flap

The closing element is surface-mounted horizontally or vertically and has a frame with a movable sliding panel, which is operated by a motor. This patented system has reduced the panel thickness to a minimum. The slide flap is therefore ideal

for use in existing buildings, as it does not protrude too deeply into the shaft, nor further reduce the free cross section of the existing opening.

Benefits

- » Surface-mounted installation for existing openings
- » The minimal frame height of 40 mm enables installation at the top of the shaft when there is little space
- » Airtight in accordance with GEG requirements
- » Low-noise drive

Performance profile

- » Use: If the existing opening is not larger than the required smoke extraction cross-section
- » Can be adapted to many ventilation openings
- » Installation hooks for simple and flexible installation

Technical specifications

- » Pre-installed and cabled chain drive for opening the sliding panel
- » Aluminium frame and sandwich panel made of galvanised sheet steel and insulation

Installation

- » The space-saving slide flap is fastened into the shaft wall or cover with the aid of the installation frame
- » Corner installation possible thanks to the supplied installation hooks